

Figure 2.B

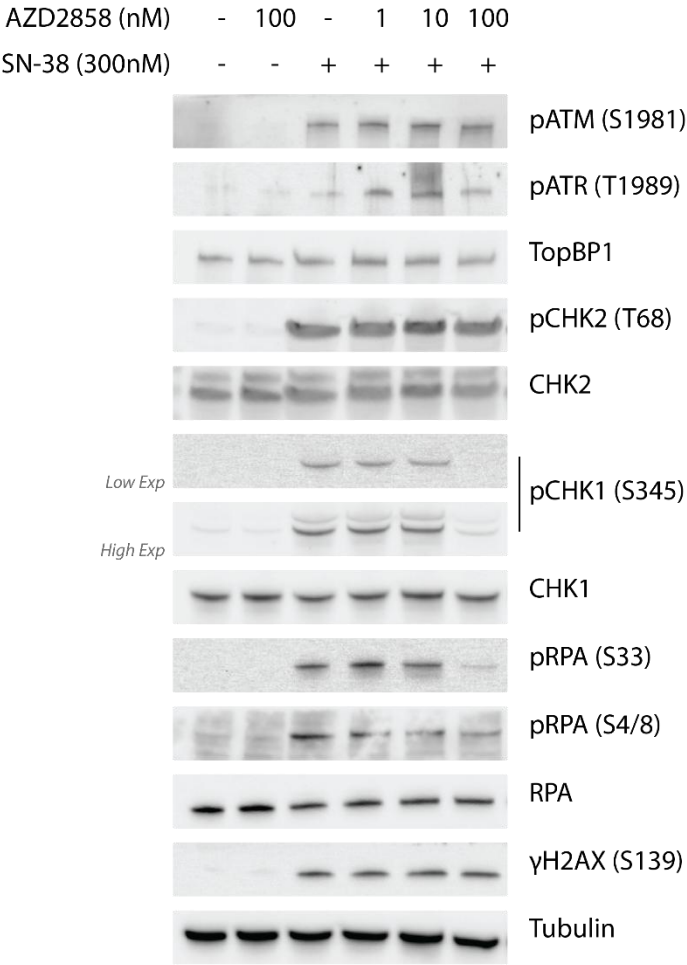
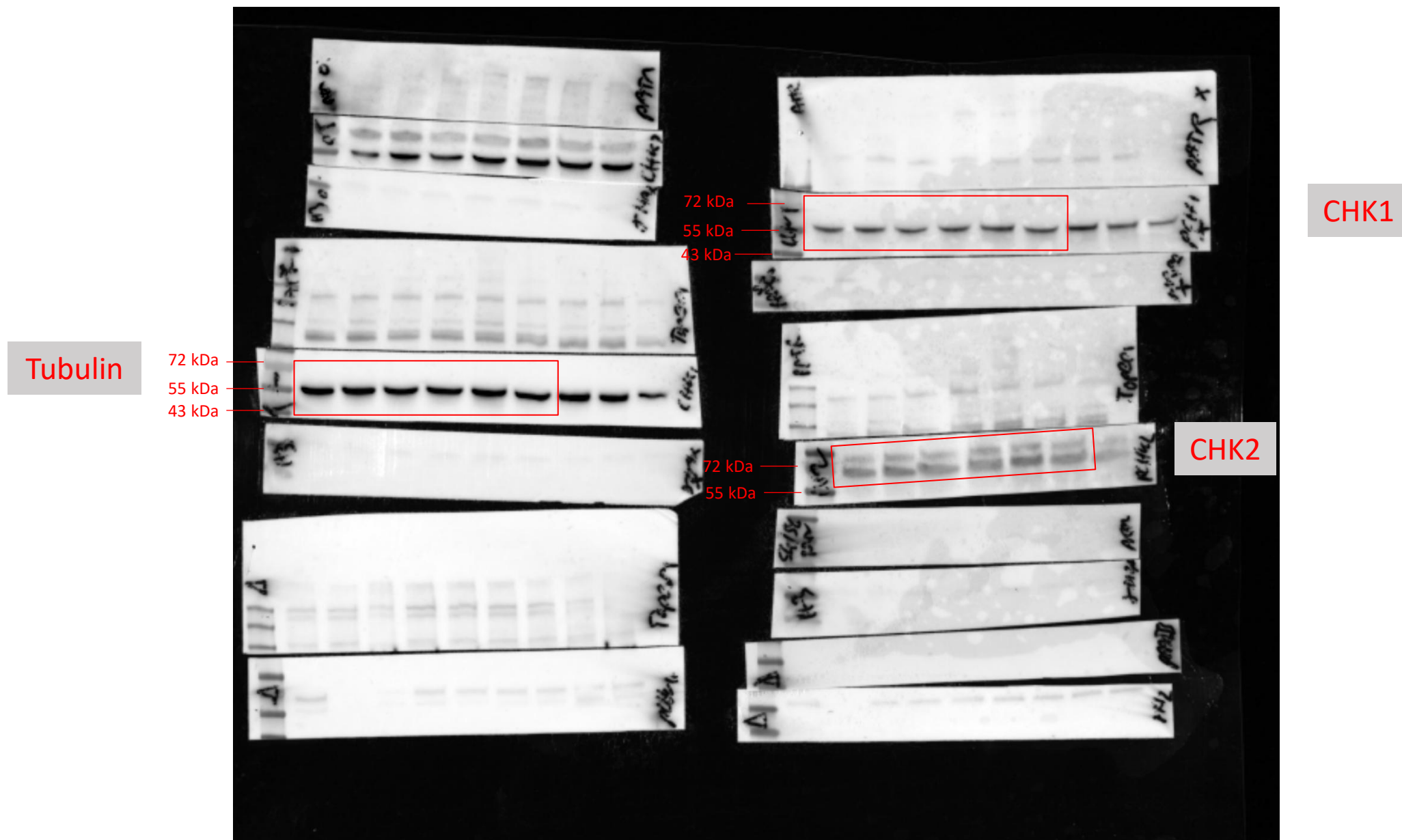
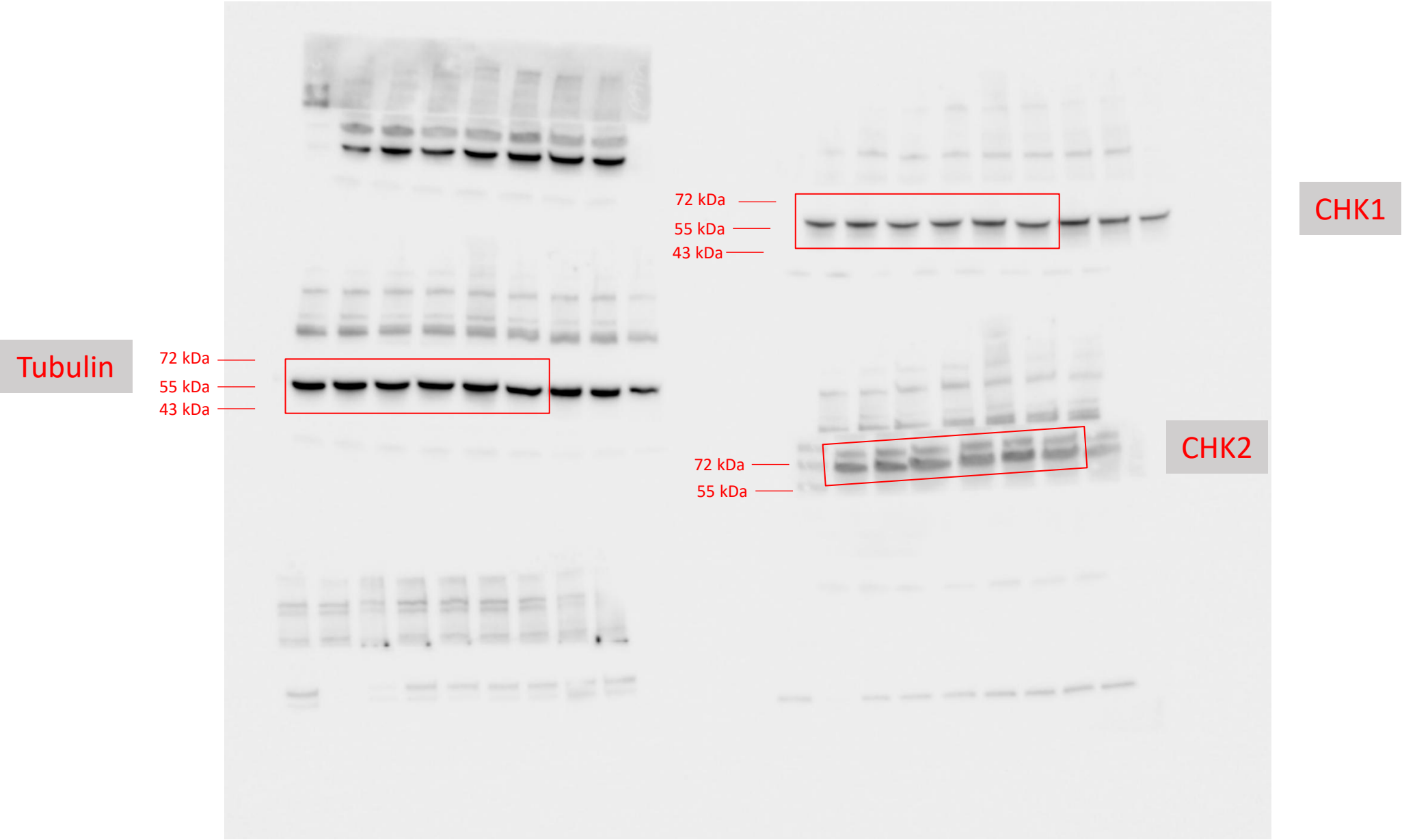


Figure 2B, Source Data 1. Below are the Original membranes corresponding to Figure 2B. Immunoblot of the indicated proteins after incubation of HCT116 cells with AZD2858 at the indicated concentrations and/or SN-38 (300 nM) for 2 h. The experiment was replicated 3 times, and a representative replicate is shown.

Merge chemiluminescence bands/colorimetric for CHK1, CHK2



Chemiluminescence bands for CHK1 & CHK2



Colorimetric for CHK1, CHK2

Tubulin

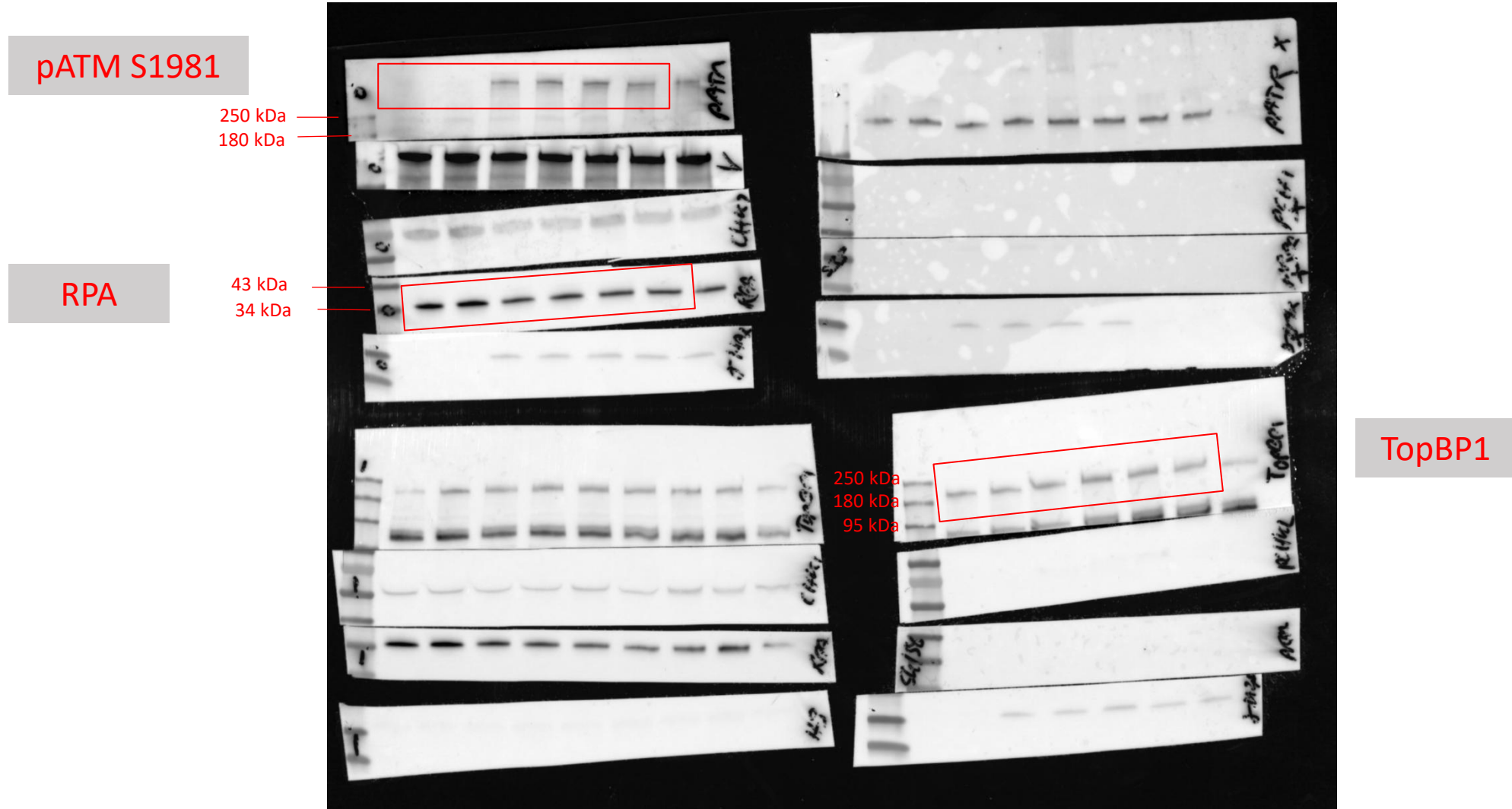
72 kDa
55 kDa
43 kDa

72 kDa
55 kDa
43 kDa

CHK1

CHK2

Merge chemiluminescence bands/colorimetric for pATM, TopBP1, RPA



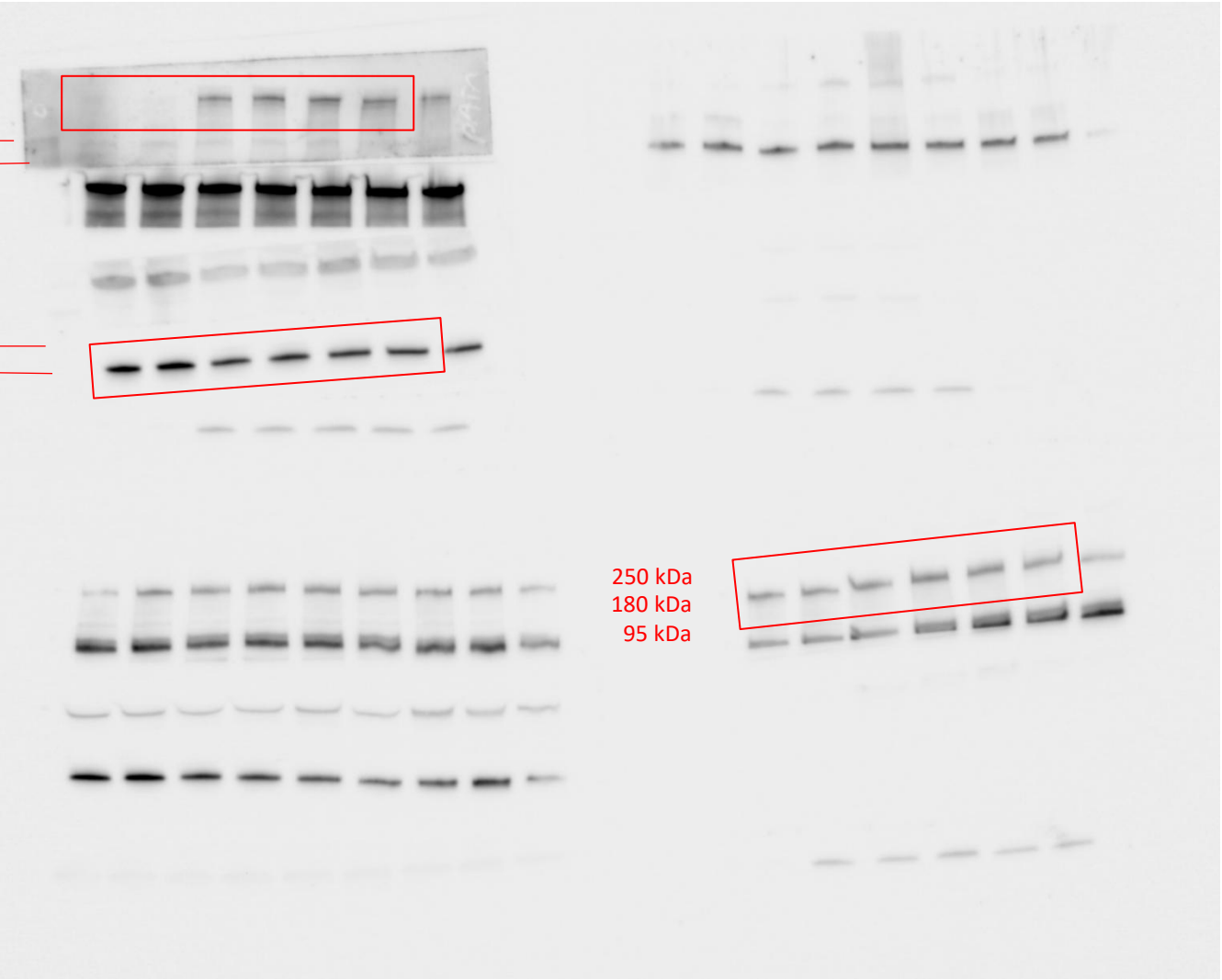
Chemiluminescence bands for pATM, TopBP1, RPA

pATM S1981

250 kDa
180 kDa

RPA

43 kDa
34 kDa



TopBP1

Colorimetric for pATM, TopBP1, RPA

pATM S1981

250 kDa
180 kDa

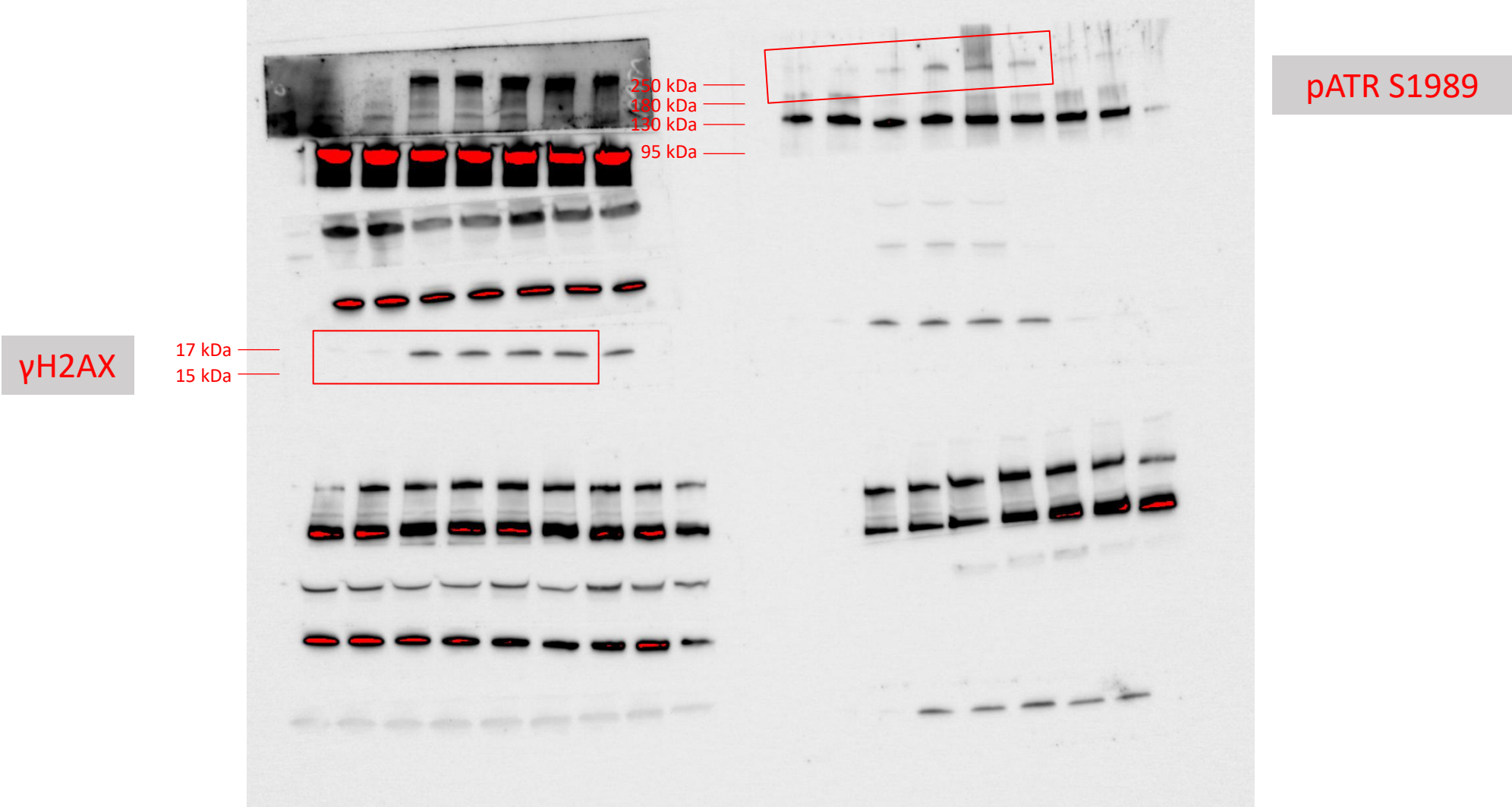
RPA

43 kDa
34 kDa

TopBP1

250 kDa
180 kDa
95 kDa

Chemiluminescence bands for pATR & γ H2AX



Colorimetric for pATR & γH2AX



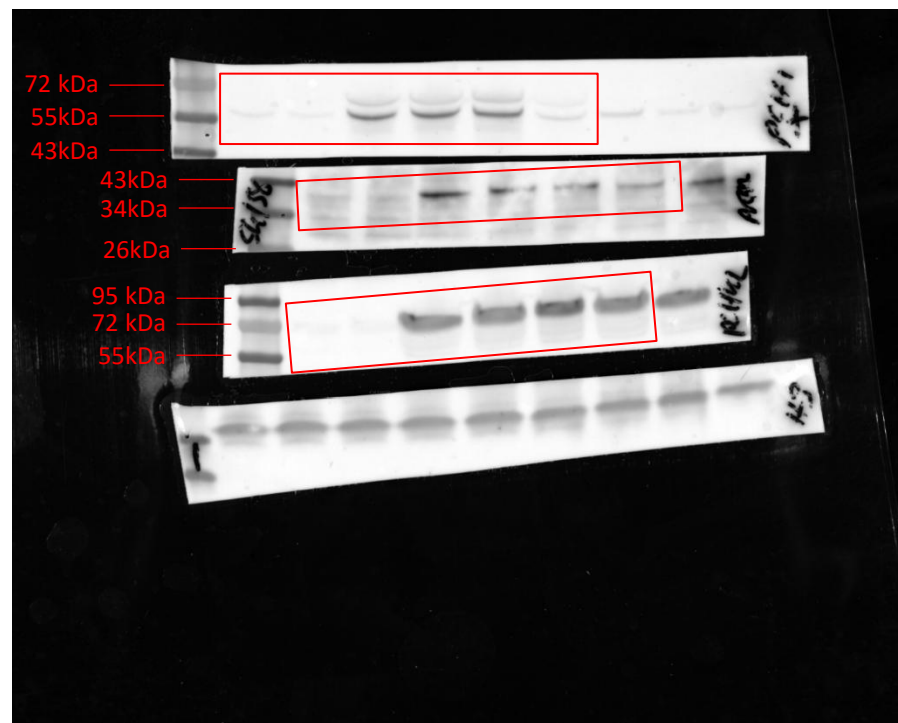
pATR S1989

Merge chemiluminescence bands/colorimetric for pRPA32 S4/8, pCHK1 S345, pCHK2 T68

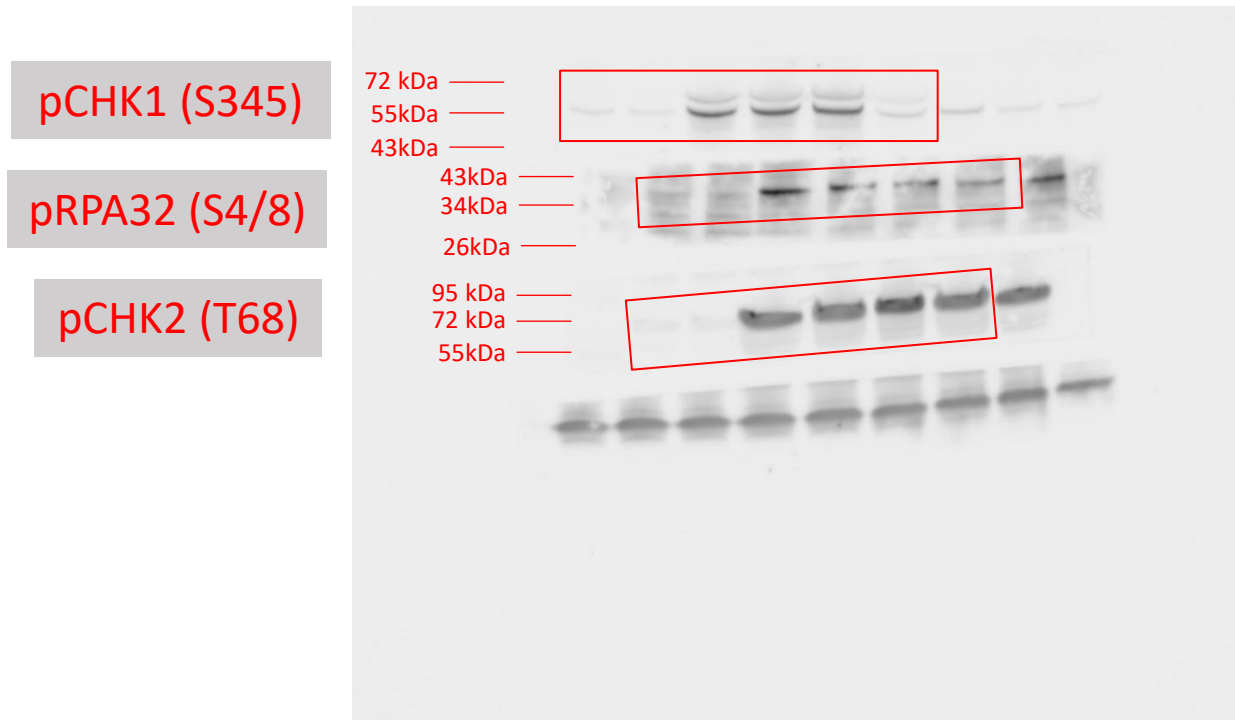
pCHK1 (S345)

pRPA32 (S4/8)

pCHK2 (T68)



Chemiluminescence bands for pRPA32 S4/8, pCHK1 S345, pCHK2 T68

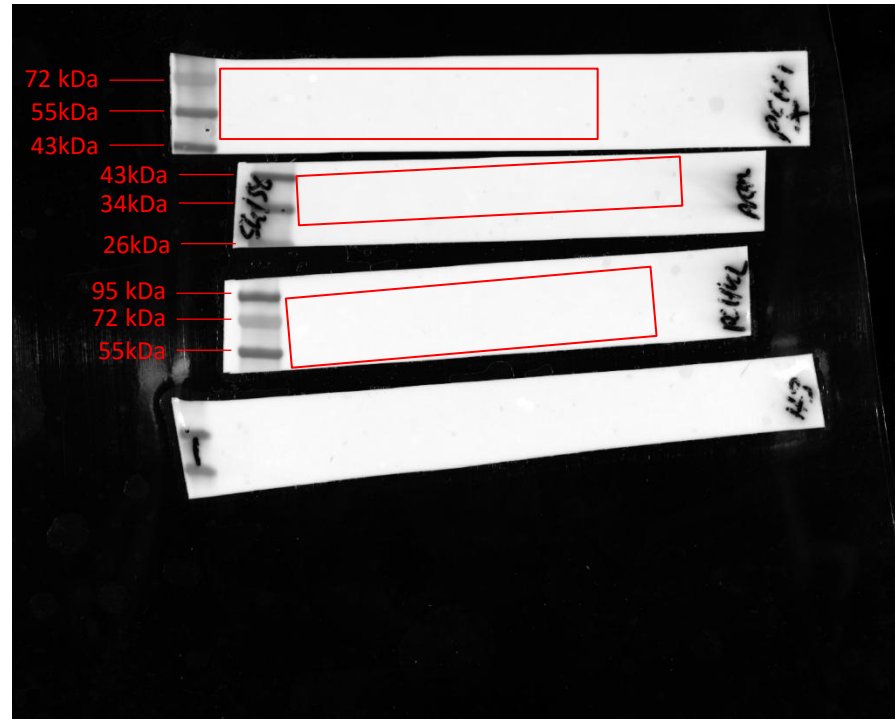


Colorimetric for pRPA32 S4/8, pCHK1 S345, pCHK2 T68

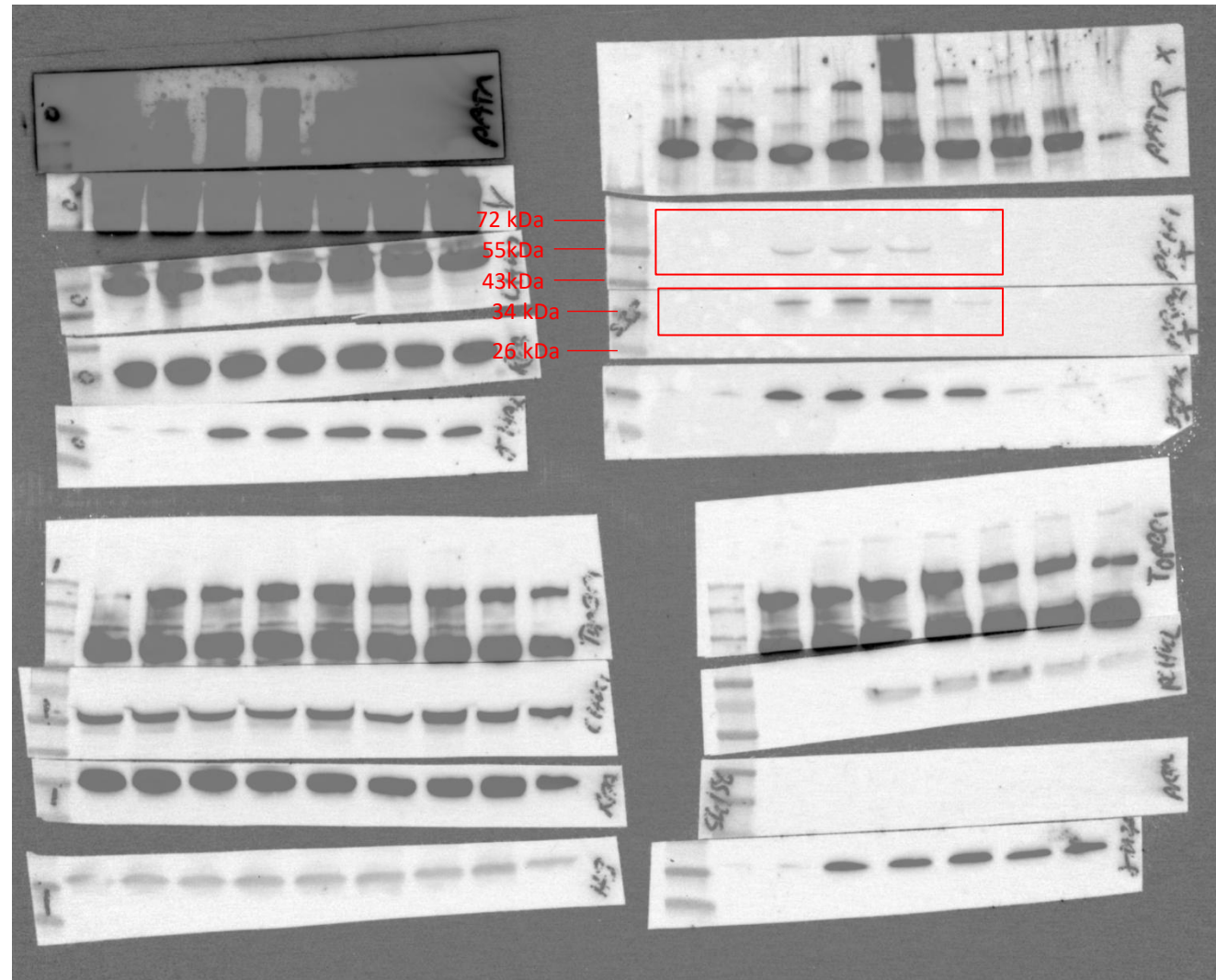
pCHK1 (S345)

pRPA32 (S4/8)

pCHK2 (T68)



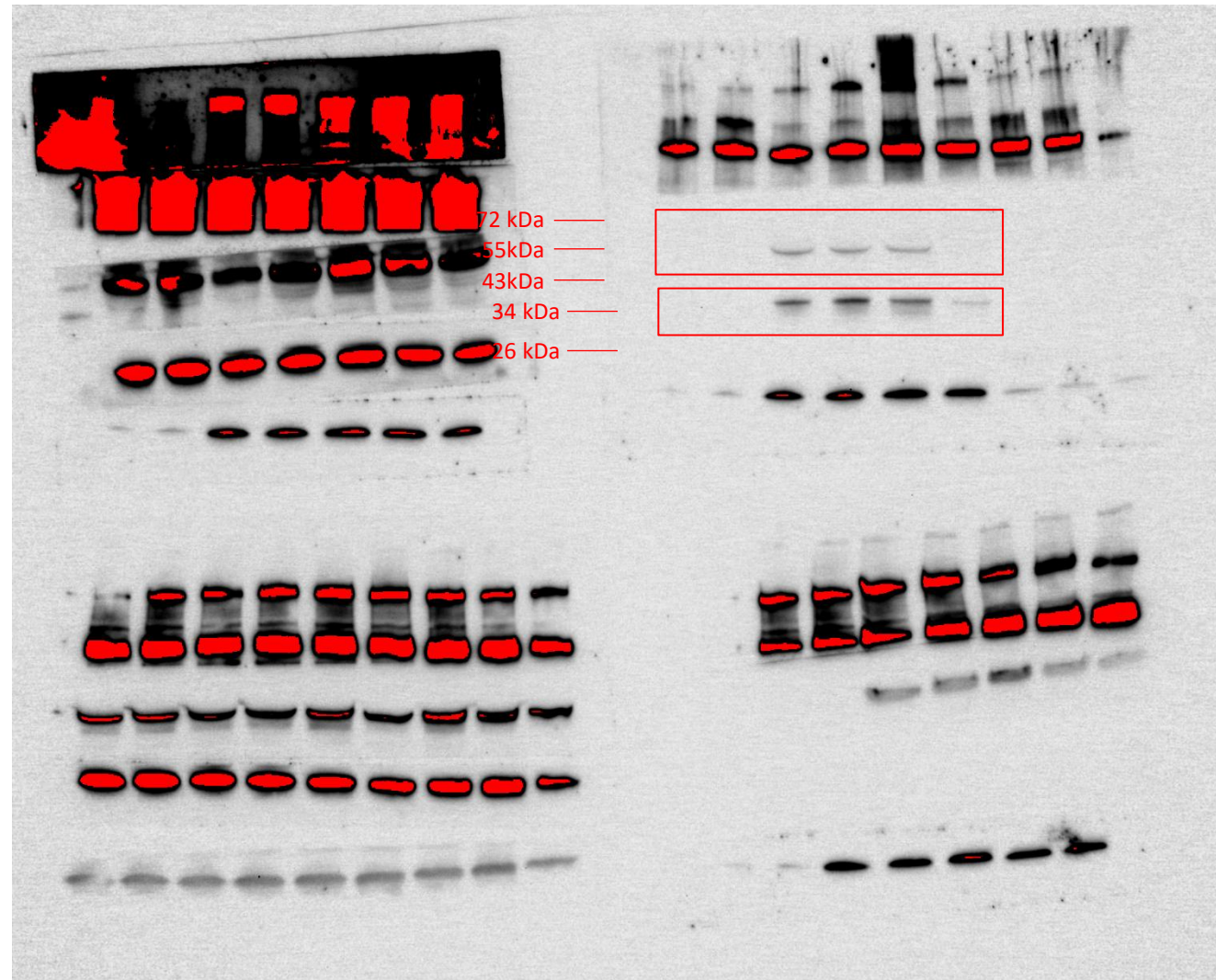
Colorimetric for pRPA32 S33, pCHK1 S345 low exposure



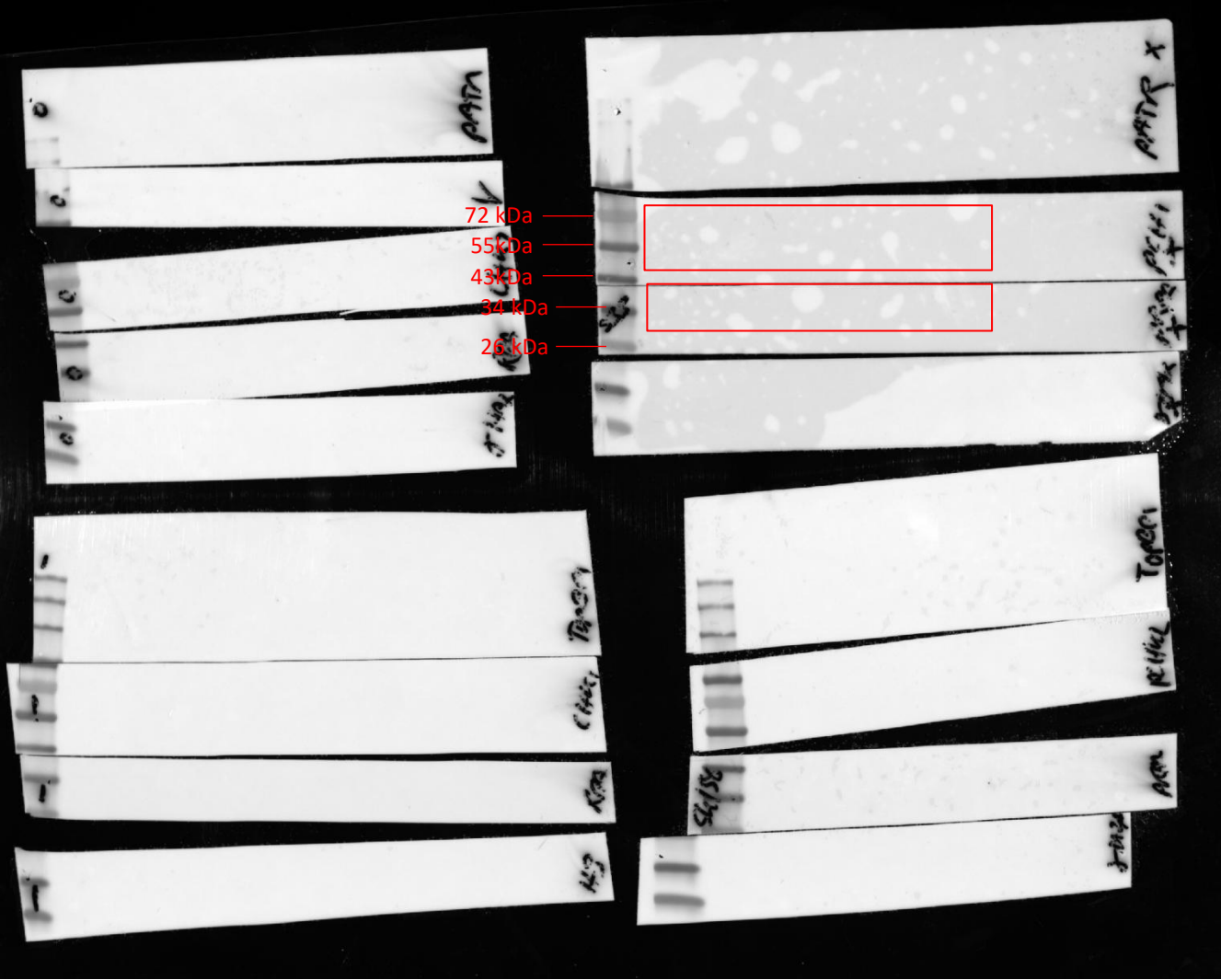
pCHK1 (S345)

pRPA32 (S33)

Chemiluminescence bands for pRPA32 S33, pCHK1 S345 low exposure



Colorimetric for pRPA32 S33, pCHK1 S345 low exposure



pCHK1 (S345)

pRPA32 (S33)